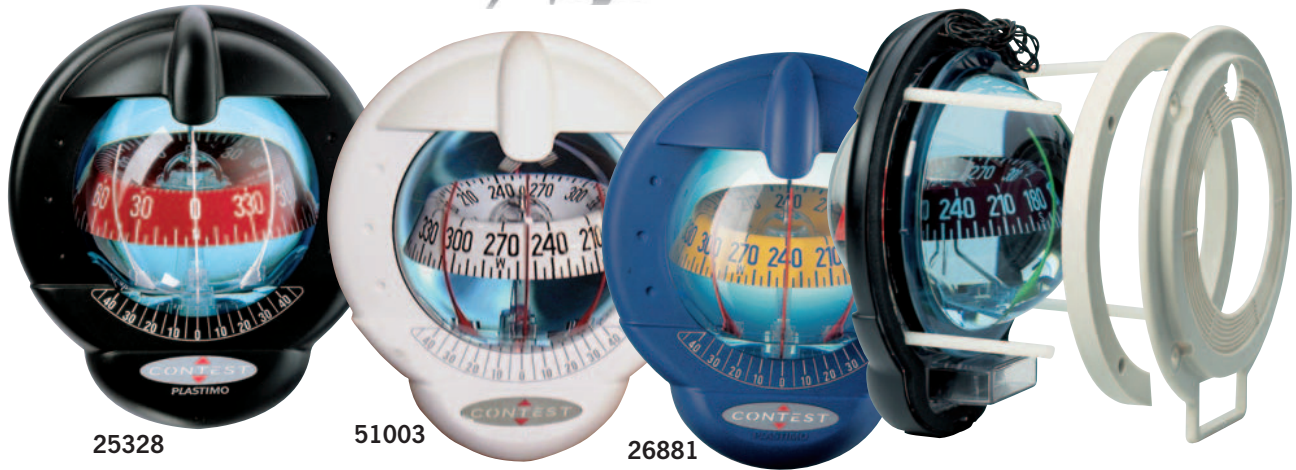


Contest 101 Compass



25328

51003

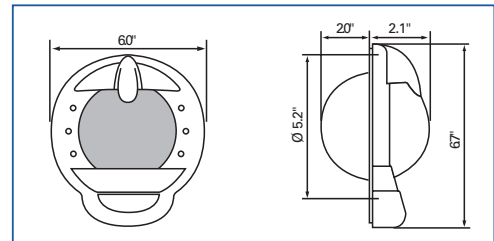
26881

NAVIGATION

Contest 101 Compass

- Ideal for 26-40' (8-12m) sailboats
- Dual-reading compass lets you view your boat's heading from both the cockpit and the cabin
- Crisp red, yellow, black or white card and 5° graduations are easy to read, up to 15' (4.6m) away
- Cone-shaped card has both vertical and horizontal graduations for front and top readings
- A 45° card clearance when heeling; 35° when pitching
- 2 lubberlines at 45° each side of the main lubberline eliminate parallax error when reading from the side
- Built-in clinometer is graduated every 5°
- 12V DC lighting built into the upper bezel distributes light precisely on the card; 24V lighting available
- Mounts in any bulkhead to 1.6" (40mm) thick (0-10°) or inclined (10-25°) from vertical

- Watertight, anti-theft installation uses four threaded, sunken plastic rods and bolts, and a back flange for a neat cabin look
- Viton® diaphragm accommodates liquid expansion and prevents bubble formation
- All parts are treated for UV-resistance
- Scratch-resistant dome
- Same footprint and drilling pattern as the Contest 100 for easy upgrades
- Includes snap-on protective cover
- Optional bezels in three colors are interchangeable
- Front access to the light and optional compensation cell



Card diameter: 4" (100mm)



25475

CONTEST 101	Vertical bulkhead 0-10°	Inclined bulkhead 10-25°
Black compass		
Red card	25328	25483
Black card	39665	40030
Yellow card	29886	31074
White compass		
Red card	25475	25487
Yellow card	29890	31078
White card	51003	51006
Blue compass		
Red card	31082	31086
Yellow card	26881	26885

See page 15 for accessories

Visit us on the web www.navimousa.com

Contest 130 Compass



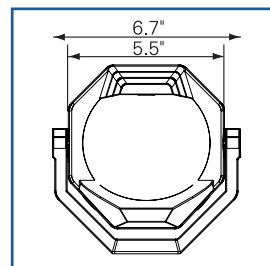
NAVIGATION

Contest 130 Compass

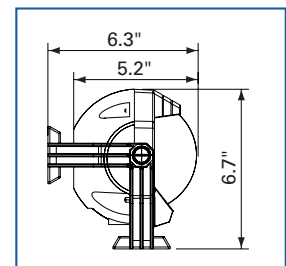
- Designed for boats over 30' (9m)
- Crisp red or black card and 5° graduations are easy to read, up to 16.4' (5m).
- Cone-shaped card has both vertical and horizontal graduations for front and top readings
- A 45° card clearance when heeling; 35° when pitching
- 2 lubberlines at 45° each side of the main lubberline eliminate parallax error when reading from the side
- Built-in clinometer is graduated every 5°
- 12V DC lighting, uses 2 bulbs to distribute light precisely on the card; 24V lighting available
- Mounts in any bulkhead to 1.6" (40mm) thick, (0-10°) or inclined (10-25°) from vertical

- Bracket version suitable for boats with enclosed cockpits allowing the compass to be mounted in any position, and removed instantly for safe storage.
- Watertight, anti-theft installation uses four threaded, sunken plastic rods and bolts, and a back cover for a neat cabin look
- Viton® diaphragm accommodates liquid expansion and prevents bubble formation
- All parts are treated for UV-resistance
- Scratch-resistant dome
- Includes protective cover
- Includes mounting instructions and adhesive template

CONTEST 130	Bulkhead-mount		Bracket-mount
	Vertical 0-10°	Inclined 10-25°	
Black compass			
Black card	39669	40034	40038
Red card	17291	17292	17293
White compass			
Red card	17294	14398	17295



Card diameter: 5" (125mm)



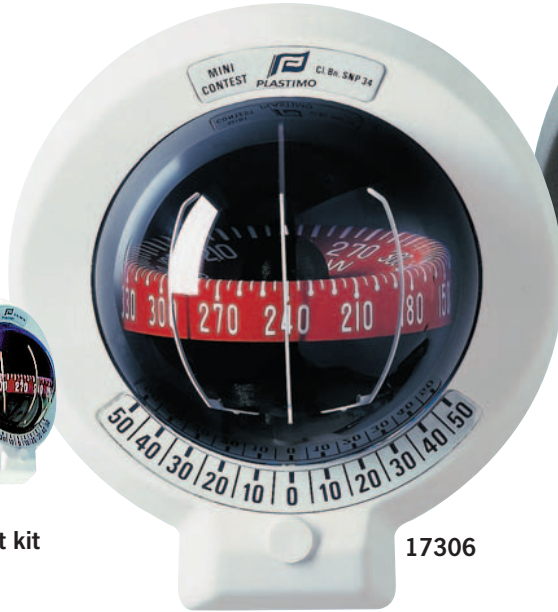
See page 15 for accessories

Call toll-free **1-866-383-1888**

Mini-Contest Compass



Mast mount kit
14077



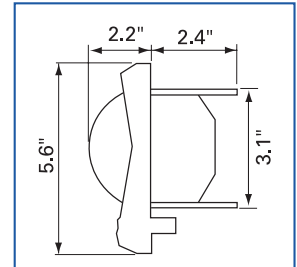
17306



17299

- For boats 19-23' (6-7m)
- Dual-reading card
- Three lubberlines assure accurate readings from any angle
- A 0°-50°-0° clinometer helps you monitor your trim
- Mounts on bulkheads from vertical to inclined 15°
- Includes 12V lighting, cover and mounting template

Mini-Contest	Model
Black compass	17306
White compass	17299



Card diameter: 3.4" (85mm)

Classic Box Compass

17245



- White card is graduated every degree and at intercardinal points
- Card remains horizontal whatever your position and is unaffected by heeling, shock and vibration
- One fore-and-aft lubberline and two additional lubberlines at 45°
- Gimbale
- Accurate up to 60° rolling and 30° pitching
- Varnished wooden box with a transparent plexiglass sliding lid