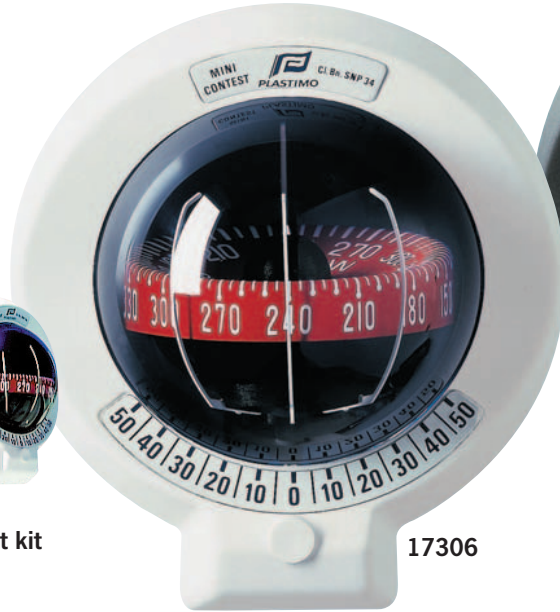


Mini-Contest Compass



Mast mount kit
14077



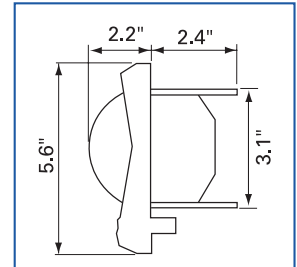
17306



17299

- For boats 19-23' (6-7m)
- Dual-reading card
- Three lubberlines assure accurate readings from any angle
- A 0°-50°-0° clinometer helps you monitor your trim
- Mounts on bulkheads from vertical to inclined 15°
- Includes 12V lighting, cover and mounting template

Mini-Contest	Model
Black compass	17306
White compass	17299



Card diameter: 3.4" (85mm)

Classic Box Compass

17245



- White card is graduated every degree and at intercardinal points
- Card remains horizontal whatever your position and is unaffected by heeling, shock and vibration
- One fore-and-aft lubberline and two additional lubberlines at 45°
- Gimbale
- Accurate up to 60° rolling and 30° pitching
- Varnished wooden box with a transparent plexiglass sliding lid

See page 15 for accessories

Visit us on the web www.navimousa.com

