

Mini-B Compass



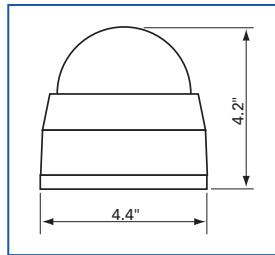
- Crisp card with large, easy-to-read numerals
- Mobile lubberlines remain accurate at any angle of heel
- Spring-mounted directional system provides maximum shock and vibration absorption
- Special diaphragm prevents bubble formation in the liquid
- Card diameter 3.6" (90mm)
- Binnacle base surface mounts with 3 screws
- Compass removes easily for security or storage with a simple twist of the binnacle
- Compensation is optional



17233

Mini-B Olympic compass for sailboats features a flat red card and 3 lubberlines.

Mini-B	Model
Mini-B Olympic	17233
Mini-B Offshore	
flat card	17234
flat card + light	14065
conical card	14061



Card diameter: 3.6" (90mm)



17234

Mini-B Offshore compass for powerboats - choose flat or conical card.

Mini-C Compass

31341 White
31318 Black

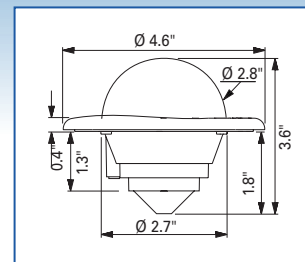


31318



31341

- Cone-shaped card with 5° graduations reads both vertically and horizontally
- Card remains horizontal at all inclinations
- Dual-reading card
- 2 mobile lubberlines for at-a-glance readings
- Special diaphragm prevents bubble formation in the liquid
- Gimballed magnet cells allows
- Mounting on any surface, whatever the inclination
- Includes mounting instructions and adhesive template
- Optional 12V lighting



Card diameter: 2.8" (70mm)

See page 15 for accessories