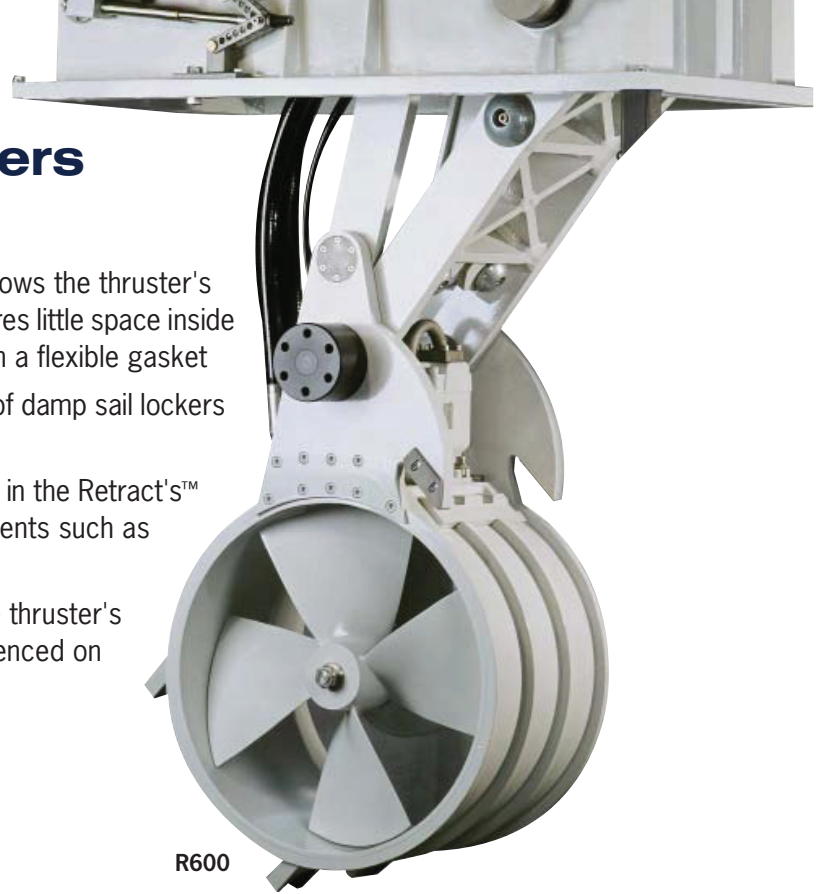




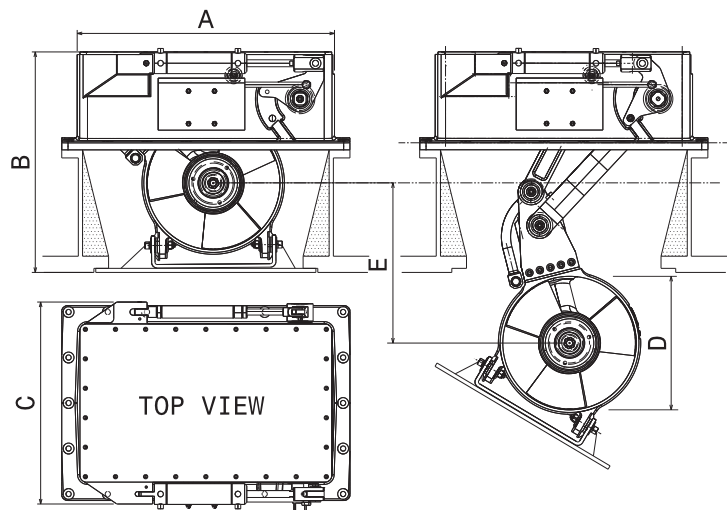
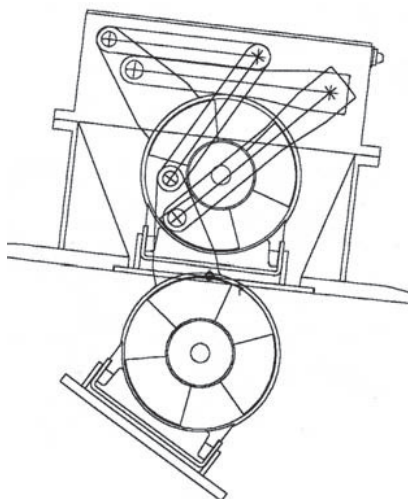
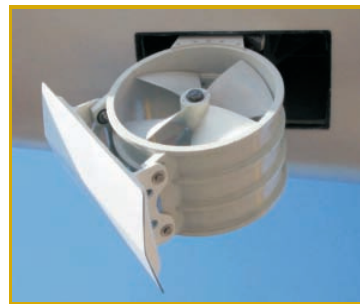
- Designed for superyachts up to 200'
- Patented double wishbone retracting movement allows the thruster's turbine to move along a perfectly vertical axis, requires little space inside the vessel and uses small hull openings sealed with a flexible gasket
- Fully water resistant -can be installed in the bottom of damp sail lockers or wet bilges
- Unique safety features include a built-in weak zones in the Retract's™ mechanism to ensure hull integrity in case of accidents such as fowling ground lines or anchor chains
- Silent block mountings between the hull door & the thruster's turbine protect against the pounding forces experienced on the hull plating of the bow section
- Lightweight aluminum alloy construction
- Case-hardened spiro-conical gears
- Axial piston motors
- Every unit is tested and run-in before delivery
- Custom design and specification services available

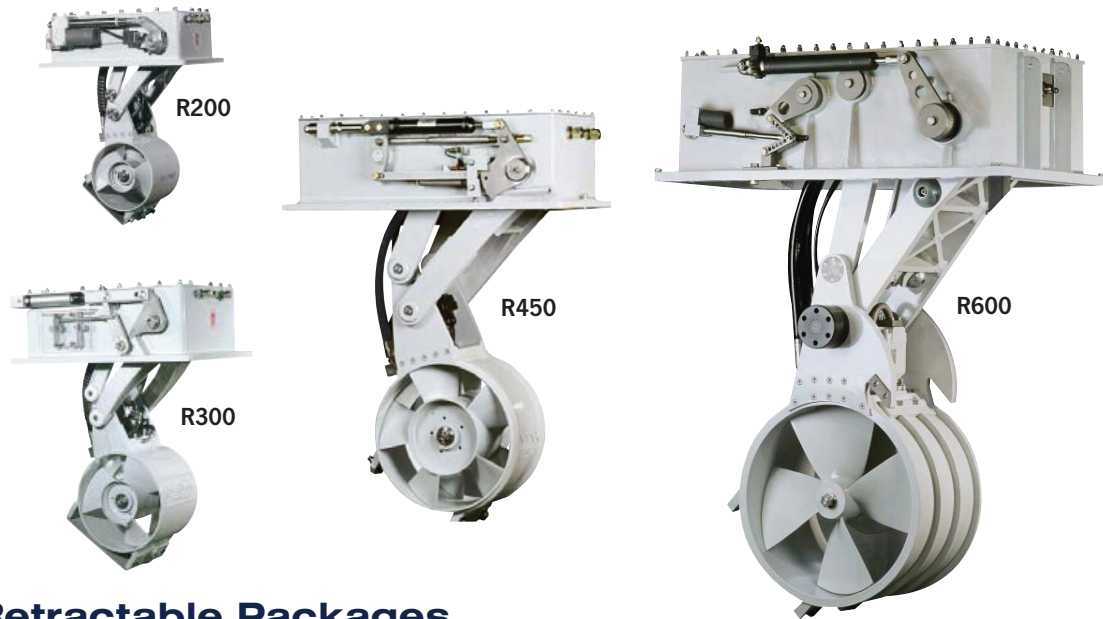


R600

THRUSTERS

Retract™ Thrusters





Retractable Packages

	R200		R300		
Model	R200/6	R200/8	R300/15	R300/21 E	R300/21 H
Reference	RT201062*	RT201063*	RT301154*	RT301213*	RT301214
Mounting Flange - Fiberglass	RT202020	RT202020	RT302020	RT302020	RT302020
Mounting Flange - Aluminum	RT202030	RT202030	RT302030	RT302030	RT302030
	24V Electro	24V Electro	24V Electro	24V Electro	Hydraulic
Max Hp	10	17	20	34	34
Power kW	8	13	15	26	26
Hydraulic Power Requirements	20 lpm / 220 bar	30 lpm / 250 bar	35 lpm / 260 bar	55 lpm / 270 bar	55 lpm / 270 bar
Closing Ram	Electric		Hydraulic & Gas spring		
Propellers	2		2		
Weight	78 lb / 35 kg		161 lb / 73 kg		
Measurements					
A	19.7" / 500mm		26.2" / 665mm		
B	14.0" / 355mm		19.7" / 500mm		
C	12.6" / 320mm		17.7" / 450mm		
D	7.9" / 200mm		11.8" / 300mm		
E	10.0" / 255mm		14.2" / 360mm		

*Electro package, which comes complete with: joystick, control box, distribution block, oil reservoir, fuse, fuse holder, electric battery cut-off switch, electro-pump, fixing bolt set.

Retractable Thrusters

	R450	R600
Model	**	**
Reference	**	**
Mounting Flange - Fiberglass	RT402020	
Mounting Flange - Aluminum	RT402030	
Max HP	50-77	75-110
Hydraulic Power Requirements	Upon Request	Upon Request
Closing Ram	Hydraulic & Gas Spring	Twin hydraulic
Propellers	2	2
Weight	331 lb / 150 kg	705 lb / 320 kg
Measurements		
A	37.0" / 940mm	47.6" / 1210mm
B	29.5" / 748mm	38.1" / 967mm
C	18.1" / 460mm	38.8" / 985mm
D	17.7" / 450mm	23.6" / 600mm
E	21.3" / 540mm	30.4" / 772mm

**Please contact Navimo USA or Max Power for consultation.